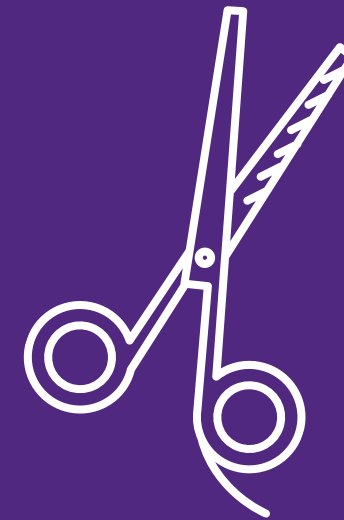
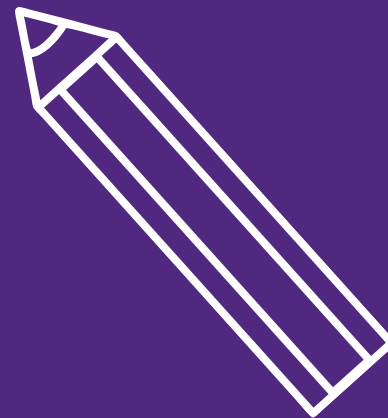
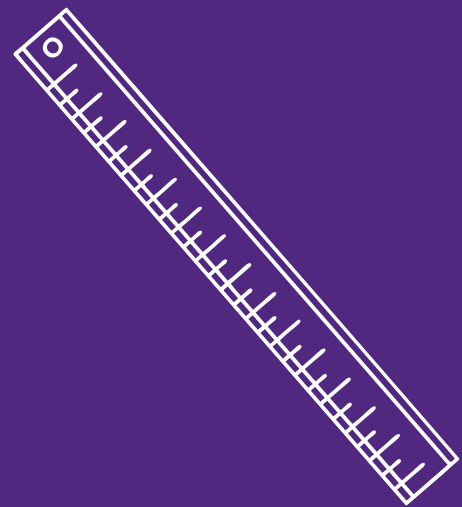




ARTIST EXHIBITIONS PROGRAM



WWW.COMMUNITYARTS.ORG/EXHIBITIONS



ABOUT CENTER FOR COMMUNITY ARTS

Center for Community Arts, a program of the City of Walnut Creek, is a place to create, connect and explore. The Center provides access to arts learning for people of all ages. Each year, more than 10,000 adults, youth and children from Walnut Creek and beyond participate in classes and workshops in painting, drawing, printmaking, ceramics, photography, digital media, dance, music, theater, fiber arts, glass, jewelry, more.

ARTIST EXHIBITIONS PROGRAM

Center for Community Arts's Artist Exhibitions program features artwork of Community Arts students and instructors. Selected students and instructors are invited to exhibit their artwork in solo and group shows at four locations in Walnut Creek: Shadelands Arts Center, Heather Farm, Boundary Oak Golf Course, and City Hall. Featured artists have the option to make their work available for purchase.





2D ARTWORK REQUIREMENTS

2D artwork submissions must meet the following criteria in order to be considered:

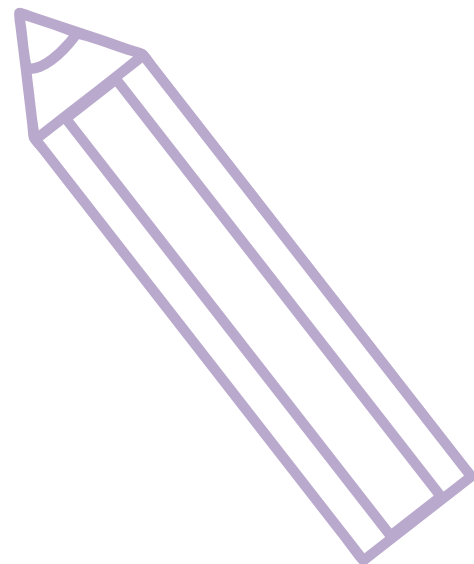
- Artwork should not exceed 60" x 60" in size and max 50 lbs in weight (including frame)
- Artwork must be framed with hanging wire installed on the back of frame. Frames must be well constructed.
- Canvas / stretchers are acceptable unframed with hanging wire installed on back



3D ARTWORK REQUIREMENTS

3D artwork submissions must meet the following criteria in order to be considered:

- Artwork should not exceed 15" x 15" x 15" in order to fit comfortably in our display cases
- 3D artwork can only be submitted to exhibitions at Shadelands



IF ACCEPTED, ARTWORK MUST BE LABELED WITH THE FOLLOWING INFORMATION:

- Artist name
- Title of artwork
- Medium or materials used to create work

* Please include this info on the back of the frame

ARTIST STATEMENT

For solo shows, a brief artist statement is encouraged but not required. Artist statements should be about a paragraph in length and include artist background and describe medium used to create work and inspiration as an artist.





ARTIST AGREEMENT

Once accepted to exhibit art in a show, participants are required to complete an Art Loan and Conditions of a Loan Form. Completed forms must be turned in before art is displayed.

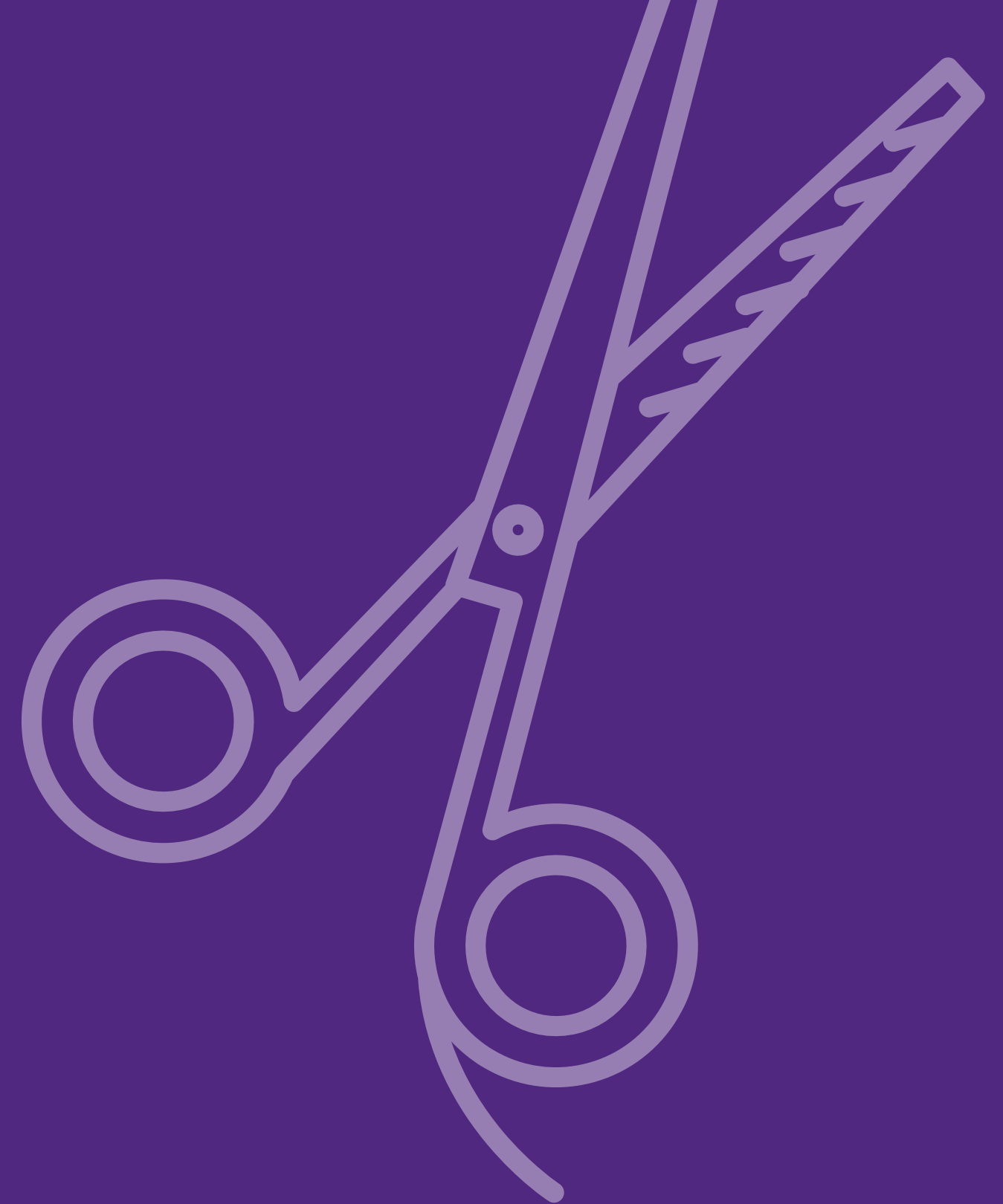
Participants have the option to list their artwork for sale during this exhibition. Community Arts will deduct a 25% commission from the sale of artwork.

ART RECEPTIONS

Artists are welcome to host an art reception in celebration of their art show. Artists should coordinate a date and time for an art reception with Community Arts. Receptions typically run for 2 hours. Community Arts can provide a table and table cloth for the event.

ARTISTS ARE RESPONSIBLE FOR:

- Providing light refreshments and food
- Set up and clean for the event
- Promoting their reception including printing and distributing postcards or flyers if they chose

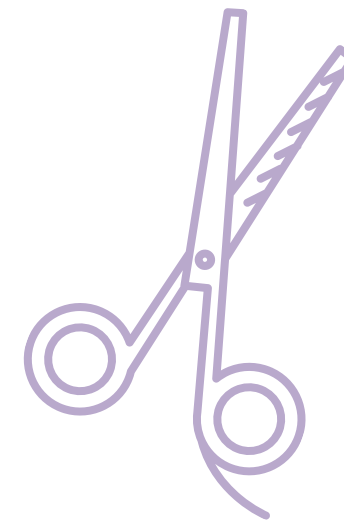
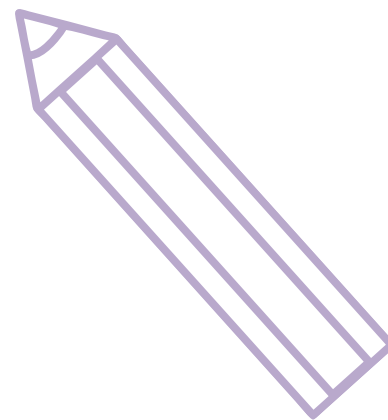
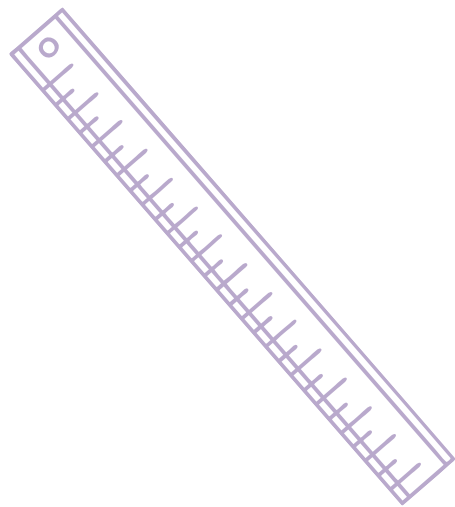


SUBMISSIONS

Artists that are interested in submitting their artwork for consideration should email Community Arts Curator, Peter Foucault at:
peterkfoucault@hotmail.com

Email inquiries should include:

Up to 5 images of work and information about artwork
(title, medium, dimensions, and date created)



WWW.COMMUNITYARTS.ORG/EXHIBITIONS



**INSPIRING CREATIVITY AND
COMMUNITY THROUGH THE ARTS.**

Opportunities for all to explore and
discover —at every stage of life

WWW.COMMUNITYARTS.ORG